



Esslingen University

Sophia & Kristin

2025/12/17

CONTENTS

Esslingen am Neckar



- ▶ 01 Overview
- ▶ 02 Student Experience
- ▶ 03 City of Esslingen
- ▶ 04 Living & Costs
- ▶ 05 Travel & Culture

01

Overview





Overview



Facts about Germany

- 83 Million Inhabitants
- Capital is Berlin
- 16 States
- Currency is Euro €
- Over 20,000 Castle

Facts about Esslingen

- 96,000 Inhabitants
- Close to Stuttgart
- Industry in Automobile, Wine Production
- University of Esslingen with 6,000 Students and 3 campuses

02

Student Experience



▶ Campus Life & Support Services



Community/Support

- International Office
- Study Exchange
- International Friends on Facebook and Instagram





Campus Life & Support Services



Sport and Leisure Time

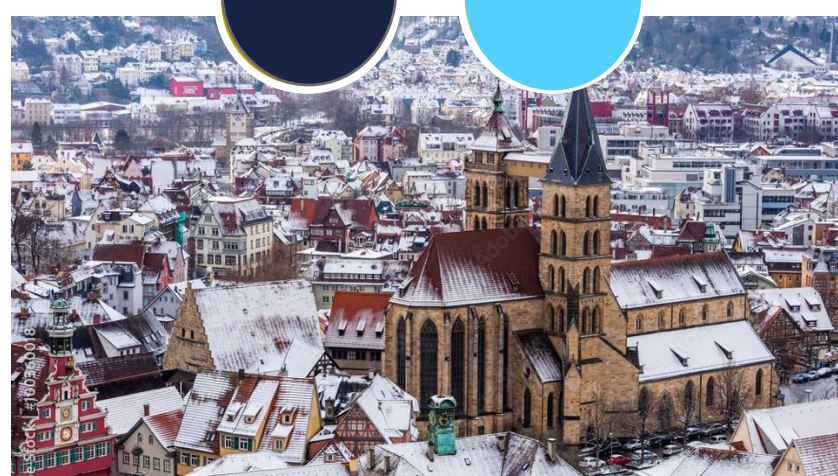
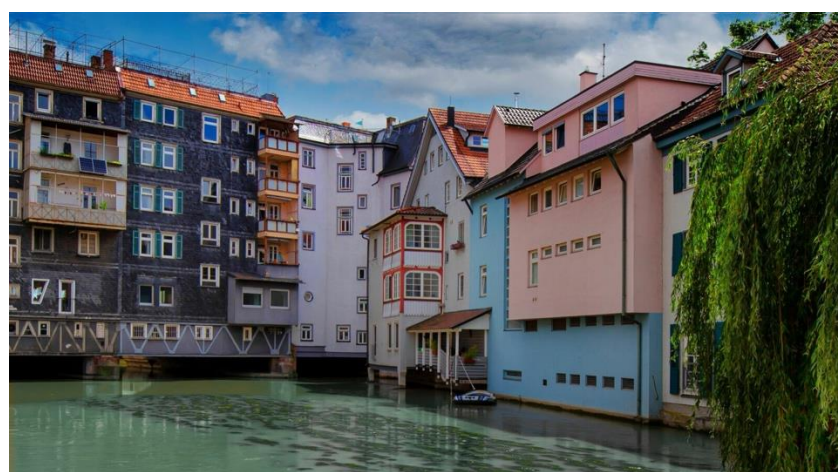
- (Hochschul-)Sport (Badminton, Basketball, Power Aerobic, Cross-Fit, Yoga, Zumba,)
- International events: e.g. Amusement Parks, City Trips (€20 / NTD740 per semester)
- University Parties, International Night



03

City of Esslingen





04

Living and Costs



Accommodation Options

University Dormitories

Budget-friendly rooms

Often one private room with a shared kitchen and bathroom

Early application is advised through the University's website

Private Shared Flats (WGs)

More flexibility and independence

Often a home-like atmosphere

Apps: WG-gesucht, ImmoScout24, Immowelt

Average Rent: €350 - €450 / month



Monthly Expenses

Monthly Budget
~€850
=NTD30,850

 Rent	€350-€450
 Food	~€200
 Transit	DeutschlandTicket: €63 per month
 Insurance	€130-€150
 Leisure	€100-€200

Semester fees: €117 per semester



Scholarship

Baden-Württemberg-Scholarship (BWS)

- Home University has to nominate students
- Nomination should be done latest by 15 May (for WS and SS)
- €700-800 per month for 3 month (total NTD 77,-88,000)
- Only in the State of Baden-Württemberg



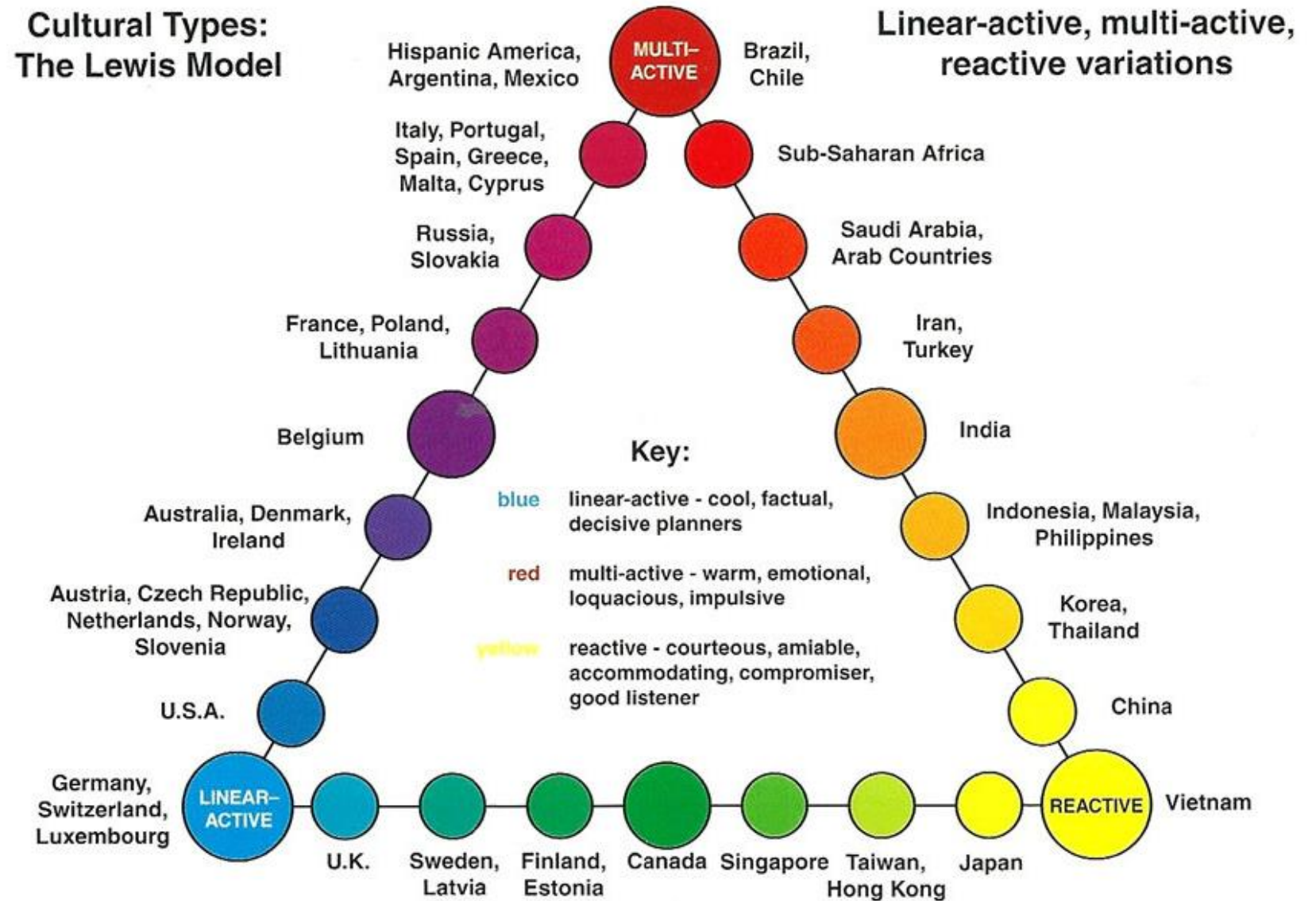
05

Travel & Culture



Cultural Differences – Lewis Model

Cultural Types: The Lewis Model





Regional Travel



Stuttgarter Spring Festival
(18. April to 10. May)

Bodensee
Lake Constanz

Swabian Alb
(Rechberg/Hohen Staufen, Schelklinge, Blautopf)





Transport & Regional Connections



Esslingen
Your Base



Stuttgart Airport
25 min by S-Bahn



Stuttgart
10-15 min by
Sbahn/Local Train





UK (London)

~ 7 hours by train
~ 1 hour 30 min by plane

Sweden (Stockholm)

~ 21 hours by train
~ 2 hours 15 min by plane

Netherlands (Amsterdam)

~ 5-7 hours by train
~ 1 hour 20 min by plane

Poland (Warsaw)

~ 11-17 hours by train
~ 1 hour 45 min by plane

France (Paris)

~ 4 hours by train
~ 1 hour 30 min by plane

Czech Republic (Prague)

~ 7 hours by train
~ 1 hour 45 min by plane

Switzerland (Bern)

~ 4 hours by train

Austria (Vienna)

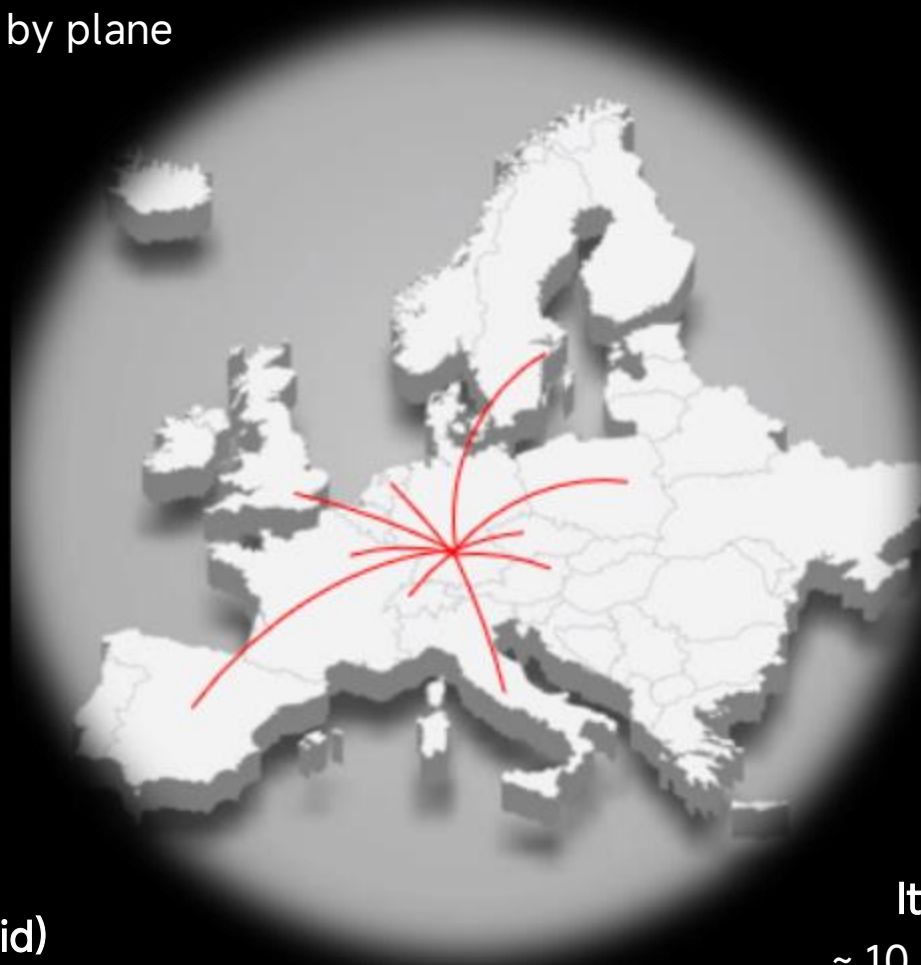
~ 6 hours by train
~ 1 hour 20 min by plane

Spain (Madrid)

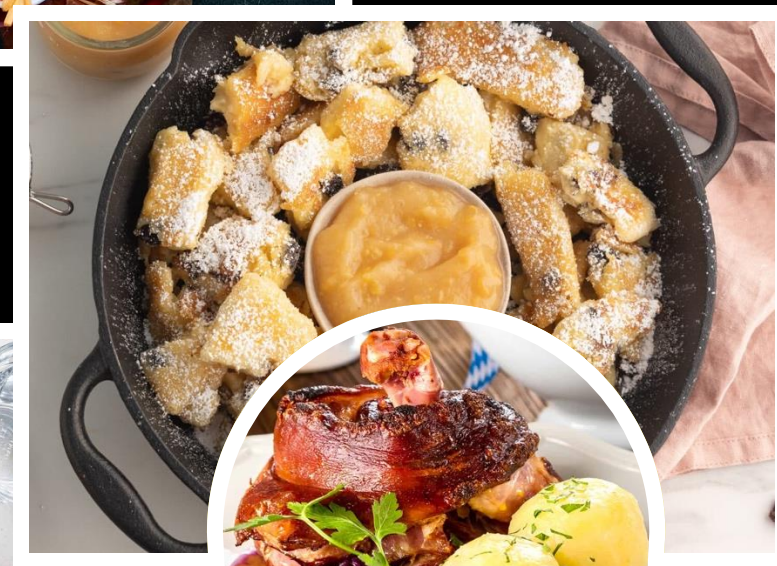
~ 26 hours by train
~ 2 hours 30 min by plane

Italy (Rome)

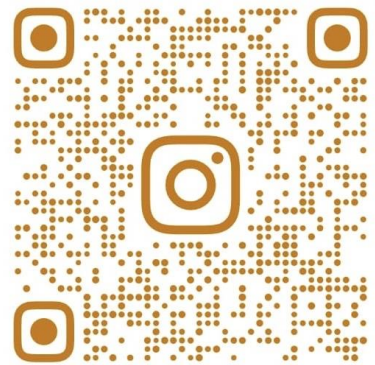
~ 10 hours by train
~ 1 hour 45 min by plane



Regional Dishes

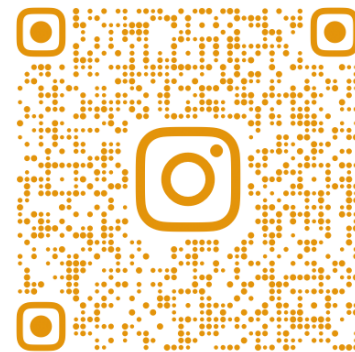


THANK YOU



@SOPHIALE.HBR

Sophia



@KRISTIN.V_

Kristin